



N SERIES

135-201 HP



VALTRA

YOUR WORKING MACHINE

WE WORK HARD TO MAKE HARD WORK EASY

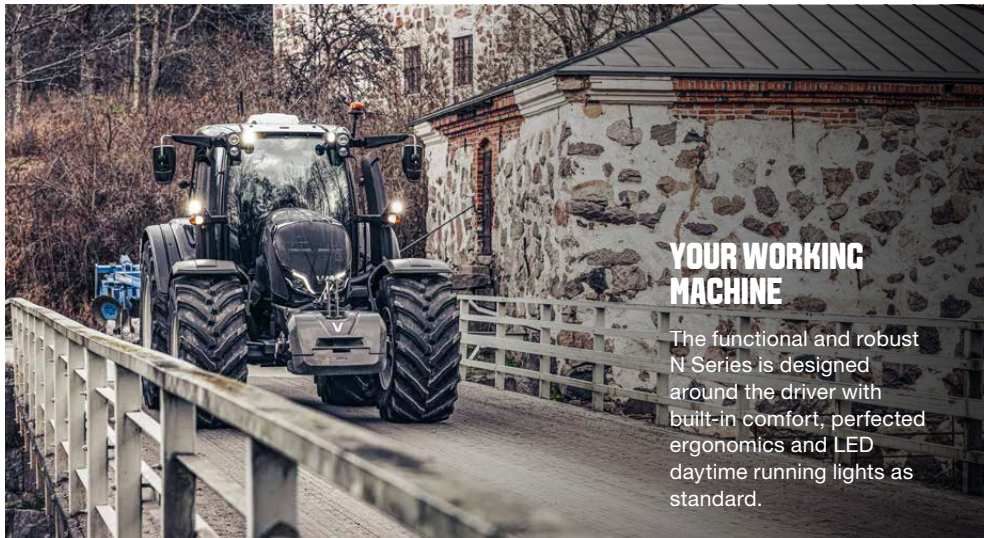
At Valtra our main focus is to understand your needs and provide you with the best tractor experience. If you are looking for the perfect combination of size, power and comfort, look no further.

The mighty yet compact Valtra N Series is the agile workhorse of the Valtra family, with ergonomics and comfort designed for easy and productive working. The LED daytime running lights increase safety in road use. A robust and reliable machine, the N Series is big where it matters.

No challenge is too big and no task is too small for our award-winning N Series. It offers the perfect ratio between size and power, and is exemplary in all-around working comfort. When you need a machine to handle a variety of tasks, the N Series shines on all fronts.

Smooth and agile movement, 365 visibility and a powerful 4-cylinder engine mean that any job can be handled with the optimal power, precision and fuel efficiency. And, with Smart Farming built in, you can rest assured your machine does most of the work for you.





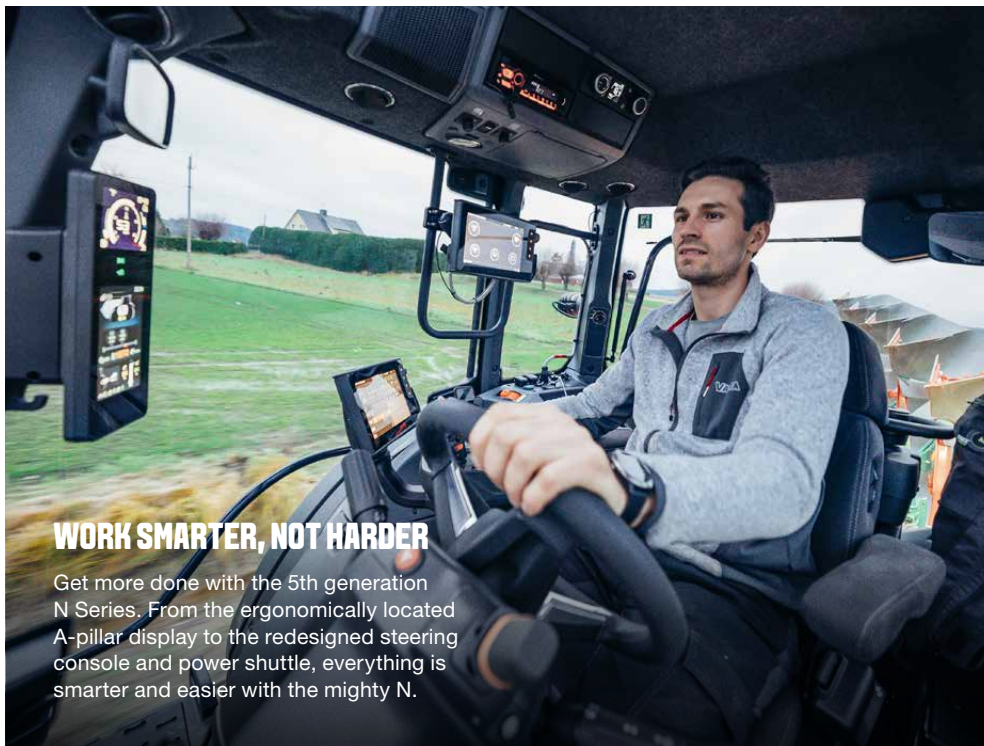
YOUR WORKING MACHINE

The functional and robust N Series is designed around the driver with built-in comfort, perfected ergonomics and LED daytime running lights as standard.



POWER AND EFFICIENCY

The Stage V engine gives you the right amount of power to get the job done with outstanding fuel economy, all while meeting the latest emission regulations.



WORK SMARTER, NOT HARDER

Get more done with the 5th generation N Series. From the ergonomically located A-pillar display to the redesigned steering console and power shuttle, everything is smarter and easier with the mighty N.



EASY OWNERSHIP

It's easy to drive and easy to service. With a 600 h service interval, you get more productive working time, and with Connect, Care & Go you'll work with added peace of mind.

WORKING COMFORT ALL DAY LONG

The N Series is all about making your working day easier. The ergonomic user interface and controls make driving a pleasure, and the smart and user-friendly A-pillar display puts information right where you need it.

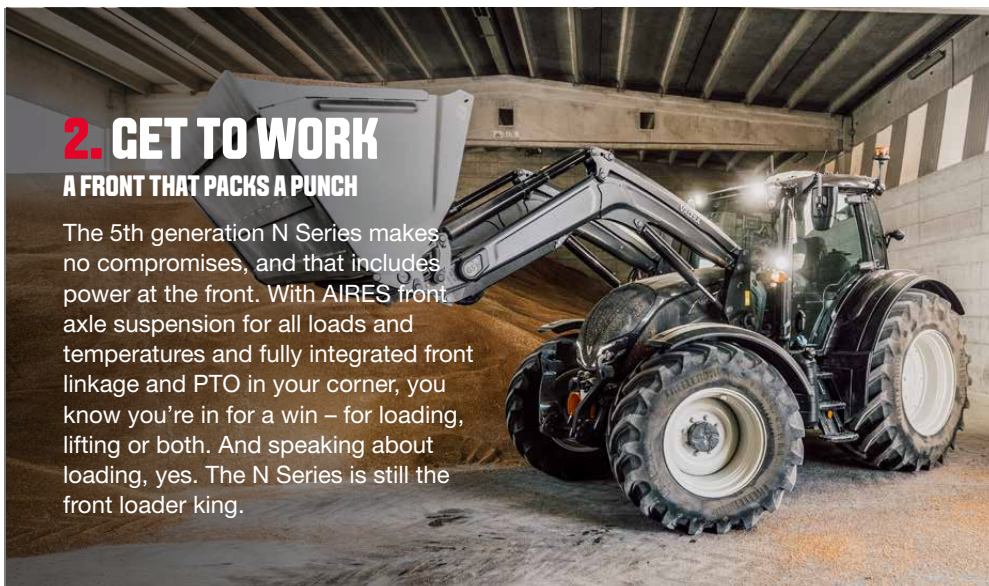
1. USER INTERFACE THE CAB IS YOUR COMFORT ZONE

The N Series has a strong focus on ergonomics and ease of use. The 5th generation updates include an improved user interface, controls and a smart A-pillar display that puts information right where you need it. The steering column and the steering wheel are renewed for better usability and visibility. And, with the industry benchmark SmartTouch in Versu and Direct models, each day brings more profit and peace of mind.



2. GET TO WORK A FRONT THAT PACKS A PUNCH

The 5th generation N Series makes no compromises, and that includes power at the front. With AIRES front axle suspension for all loads and temperatures and fully integrated front linkage and PTO in your corner, you know you're in for a win – for loading, lifting or both. And speaking about loading, yes. The N Series is still the front loader king.



3. REAP THE BENEFITS BUILT TO SAVE TIME AND MONEY

It's not just the fuel-saving engine or the high output. Or the power on the ground, or the transmission automatics, or the agility. The whole of the N Series is designed to save your time, money and nerves. With Valtra, low cost of ownership and improved efficiency is always part of the plan.



4. POWER

THE POWER TO BOOST YOUR PRODUCTIVITY

The Stage V engine gives you dependable power, while Start Boost and Superstart give you easy starts under high loads, with easy adjustment via the A-pillar display.

5. 365 DAY & NIGHT VISIBILITY

SEE YOUR NEXT MOVE IN ANY CONDITIONS

See everything from the driver's seat. The visibility is truly excellent. Side window wipers clear your side view and 10 roof air vents help keep the windows mist-free. The LED daytime running lights increase safety and improve your working experience.

6. MULTI-PURPOSE

SUPERB FEATURES AND OPTIONS

Customise your tractor with Valtra Unlimited for farmyards and fields, add a front loader or choose implements for forestry or municipal work. Whatever you need, we can make it happen.

7. SMART MACHINE

MAKE THE TECHNOLOGY WORK FOR YOU

Use Smart Farming technology to be more productive and to save inputs and increase the yield of your fields. The N Series is packed with convenient technology that makes all your tasks easier.



8. KING OF ANY TERRAIN

SMOOTH DRIVING, FAST WHEN NEEDED

Drive comfortably on all terrain. You get high road speeds, a smooth driving experience on-road as well as high ground clearance and pneumatic front suspension for comfort off-road.

9. THINK THE OTHER WAY AROUND

VALTRA'S UNIQUE TWINTRAC SYSTEM

Drive forwards and backwards with Valtra's unique TwinTrac reverse drive system. With incredible rearview visibility and the optional SkyView roof, you can work effectively and safely in all directions.

10. CONNECT, CARE & GO

ALWAYS CONNECTED, ALWAYS IN CONTROL

Get total peace of mind with our service concept: Quick daily service checks, a 600 h service interval and Valtra Connect, Care and Go.

DESIGNED AROUND YOU

Everything about the 5th generation N Series is designed around the driver for maximum comfort, ergonomics and visibility. The narrow dashboard and slim steering column give an unobstructed view of the front wheels and front-mounted implements or a front loader. The centre console is designed to ensure more leg room for even the tallest drivers. Take your seat and take a good look around you – everywhere you see there are numerous improvements to make your working day the best it can be.

The N Series comes with excellent work lights for dark and difficult conditions as well as safety improving LED daytime running lights. The 365 day & night visibility continues with the design of the cab.

The forward leaning roof with the optional, large roof window has minimal overhangs for great visibility. For special tasks, the optional SkyView cabin makes the great view even better

The unique, sweeping A-pillar design increases forward visibility, provides better

aerodynamics in transport and enables the air intake and exhaust pipe to be positioned close to the cab for better durability. The air conditioner is placed on the roof for easy maintenance.

You already know the cab is designed for comfort, but the look of the interior is pure premium as well. You can choose from two cab trims: Standard (light) and Premium, which comes with a stylish dark roof and side panels, a leather steering wheel and chrome finishes on the majority of the 12 air vents.



A-PILLAR DISPLAY

The large, clear and ergonomically placed A-pillar display comes as standard with all models. It displays the needed tractor information, enables the control of key tractor settings and helps follow the tractor's performance. All settings are easily controlled with an encoder (rotating ring) and two push buttons.

INFORMATION AND WARNING LIGHTS

are also integrated in the A-pillar display as two LED icon matrixes, lit when needed.

TOP

The top of the display shows essential information such as your ground speed, clock time, the engine RPM and fuel levels. When needed, the rest of the display can be dimmed.

MIDDLE AND BOTTOM

The middle and lower screens show the tractor's transmission status and performance including pre-set gears and cruise speeds. You can configure the areas to display information that is essential to you and your tasks. In HiTech and Active models this also works as an easy-to-use tool for settings.



THE FRONT LOADER KING

The Valtra N Series is already known as a front loader specialist, and now it's even better. It comes with an integrated heavy duty loader subframe and a lock-and-go loader attachment. The modern clean beam design with enclosed pipework, follows the tractor bonnet line for an excellent view of your load.

And because it's a Valtra, you get complete, convenient control of your front loader. All models come with electric armrest controls and a three function hydraulic joystick. You can also set and view your front loader settings from the new A-pillar display.



1. Easy electric armrest control and three function hydraulic joystick
2. Great visibility of the loader
3. 'Lock & Go' semi-automatic quick attachment system
4. Loader live 3rd function for multiple tasks, even with constant flow
5. Electric flow limits for loader functions and full control (time and flow) for live 3rd
6. Curved cross tube with enclosed control valve
7. Up to 160 (200) l/min hydraulic output
8. Patented hydraulic assistant
9. Roof window for excellent visibility
10. Long wheel base for great stability during front loader work



YOUR SMART TECHNOLOGY BUILT IN

Valtra Smart Farming is a set of technologies that work seamlessly together – Valtra Guide, ISOBUS, Section Control, Variable Rate Control and TaskDoc®. A key design principle of our technology solutions is the ease of use.

A better quality of life is at your fingertips. Smart Farming is the key to easier workdays, bigger profits and maximum precision.

All smart functions can be controlled with our innovative SmartTouch armrest. Tasks are managed with taps and swipes, just like your smartphone, but even easier.

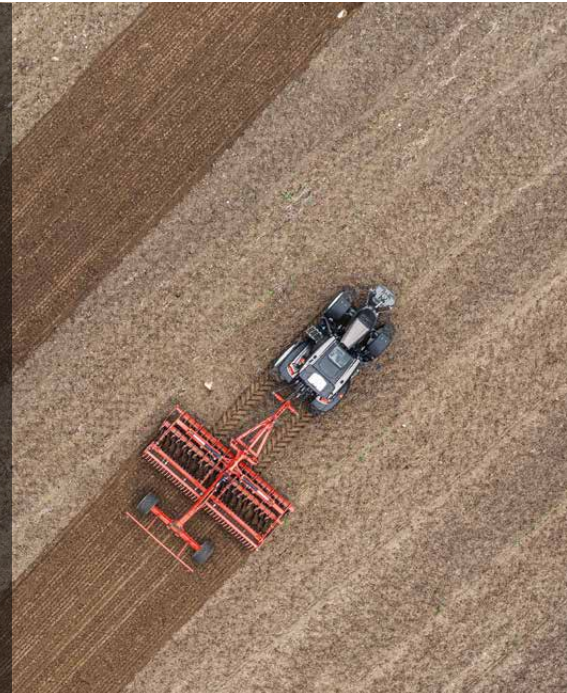
Smart Farming features are also available in Active and HiTech models. They can be controlled via the separate SmartTouch Extend screen.

Valtra Guide helps to improve efficiency, reduce overlap and enhance operator comfort, whatever the farm size. You can choose between submeter, decimeter or even centimetre accuracies depending on your demands and application.

VALTRA GUIDE

Valtra Guide is our auto-guidance solution that has been developed based on real user feedback. We wanted to make sure that recording and configuring waylines and boundaries are as easy as it gets. Valtra Guide is your go-to companion when you want to work more efficiently and get more from your fields while worrying less about gaps, overlap and unnecessary driving on the field.

Valtra Guide uses GPS guidance to steer your tractor for you. The automatic steering follows waylines precisely and reduces overlaps, saving you time, fuel and money. Because you don't have to focus on the steering, you'll be able to concentrate on your implement, work longer days, cover more ground and still be relaxed.

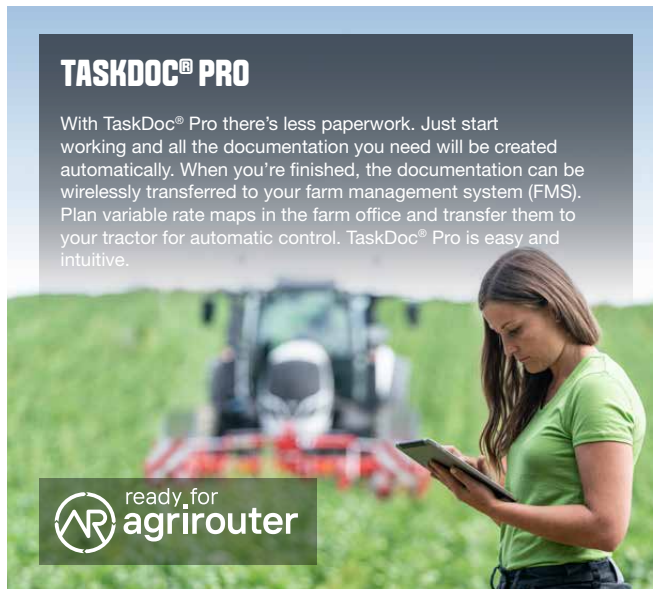


VALTRA U-PILOT HEADLAND MANAGEMENT SYSTEM

With Auto U-Pilot you can start your headland management sequence automatically when the tractor goes over a set headland line, making work both perfectly precise and easy.

TASKDOC® PRO

With TaskDoc® Pro there's less paperwork. Just start working and all the documentation you need will be created automatically. When you're finished, the documentation can be wirelessly transferred to your farm management system (FMS). Plan variable rate maps in the farm office and transfer them to your tractor for automatic control. TaskDoc® Pro is easy and intuitive.



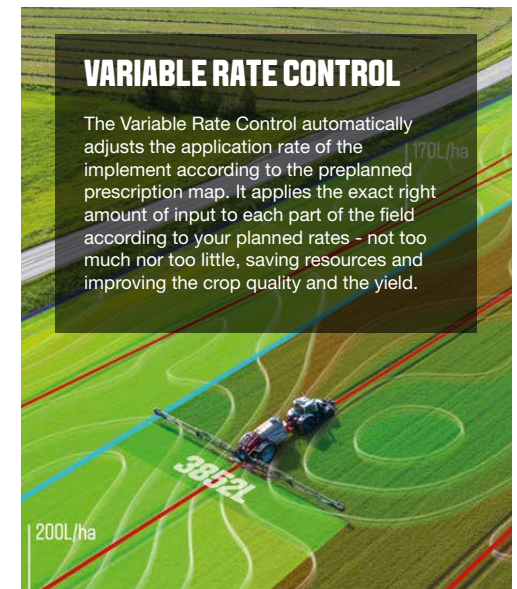
ISOBUS

With Valtra SmartTouch and ISOBUS, you can work with any ISOBUS-compatible implement, from any manufacturer. SmartTouch lets you connect implements quickly and easily, plus it gives you the high level of control that precision farming demands. The ISOBUS standard (ISO 11783) is what makes this possible.

ISOBUS makes compatible implements "Plug and Play", so when you connect the implement to your Valtra tractor, all the relevant machine data is uploaded to the terminal immediately.

VARIABLE RATE CONTROL

The Variable Rate Control automatically adjusts the application rate of the implement according to the preplanned prescription map. It applies the exact right amount of input to each part of the field according to your planned rates - not too much nor too little, saving resources and improving the crop quality and the yield.





VALTRA SECTION CONTROL

With Section Control your tractor and your implements are automatically controlled to deliver the correct seed and fertiliser rates to each part of each field without over- or underlap. This helps you reduce input costs, improve yields and maximise your profits.



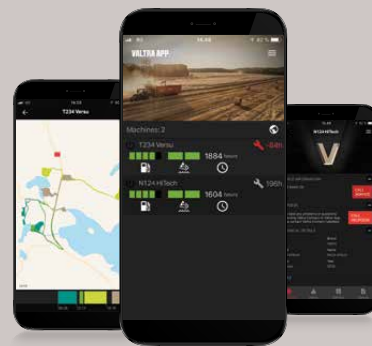
SMARTTOUCH USER INTERFACE IN VERSU AND DIRECT MODELS

1. The design allows for easy lever movement in all four directions to control tractor speed.
2. Three valves - of your choice - can be controlled from the joystick.
3. Further four valves are controlled from the linear levers.
4. The buttons and switches are designed with a function first approach, therefore buttons with different functions look different.
5. Three programmable (M) memory buttons for any tractor operation or operations (U-pilot).
6. Forward / reverse lever at the drive lever.
7. No additional screens needed - Valtra Guide and safety camera displays are integrated into the SmartTouch screen.
8. Rear linkage - The easy-to-use limiter enables even the smallest adjustments of the rear linkage.
9. The functional structure of the armrest provides a good grip on rough terrain and gives good support to your arm.
10. With Active and HiTech you can also control SmartFarming features through the optional SmartTouch Extend screen.

VALTRA CONNECT

Valtra Connect is our telemetry solution that records tractor activity and GPS movements, all the time. It can display history and real time data on your mobile device and you can access the data anywhere, anytime. Using this data, you and your Valtra service partner can anticipate maintenance needs, and react faster to solve minor issues and avoid extra visits to your authorised service centre.

FIRST 5 YEARS FOR FREE



AGCO telemetry for customer
Fully customer and user driven user experience



Easy to navigate menu structure.



The settings are logical and easy to set up with swipe gestures. All settings are automatically stored in the memory.



The 9" touchscreen, large controls, settings and functions are easy to understand.



You can assign any control to operate any hydraulic function, including front and rear hydraulic valves, front and rear linkages and the front loader.



Configure the work lights easily with the 9" touchscreen. Premium and Premium+ work lights also include settable cornering lights, which are controlled by wheel angle sensor in the front axle.



Profiles for operators and implements which can be easily changed from any screen menu. All the setting changes will be saved in the selected profile.

UNBEATABLE VALTRA TRANSMISSION

Valtra's N Series transmissions are designed and made by Valtra, and the fifth generation brings again new features. With Valtra you can drive your Powershift tractor like a CVT. In automatic modes the transmission does the shifting based on your acceleration and torque requirements, so you always get the best fuel economy and the power you need.

In Direct models, the Direct CVT transmission gives you unequalled performance. There are four working areas that give you high efficiency at all working speeds. From low speeds and heavy pulling to light road transport, you'll always have the right power available.

With the Valtra N series, your tractor's transmission delivers the right power for the job automatically. HiTech, Active and Versu models come with Powershift, and Direct models come with the Direct CVT. Versu and Direct come with the user-friendly SmartTouch user interface as standard.

The 5th generation N Series adds new features; new hardware and software that support smooth and quick working range changes. Automatic range changes can be set more freely according to the needs of the operator. In manual mode, the Powershift drive lever can also change the group gear. You can choose the top speed on all models from 40 or 50 km/h.

VERSU

- Five-step powershift
- Load sensing hydraulics
- 115 l/min std pump capacity
- 160 or 200 l pumps
- SmartTouch user interface
- Smart A-pillar display

DIRECT

- Four work areas
- Strong CVT
- Automatic and manual modes
- Load sensing hydraulics
- SmartTouch user interface
- Smart A-pillar display

HITECH

- Five-step powershift
- Open centre 73/90 litre hydraulics
- Mechanical spool valve controls
- Basic or Armrest controls
- Smart A-pillar display

ACTIVE

- Five-step powershift
- Load sensing hydraulics
- Mechanical hydraulic controls
- Basic or Armrest controls
- 115 l/min standard pump capacity
- 160 or 200 l pumps
- Smart A-pillar display



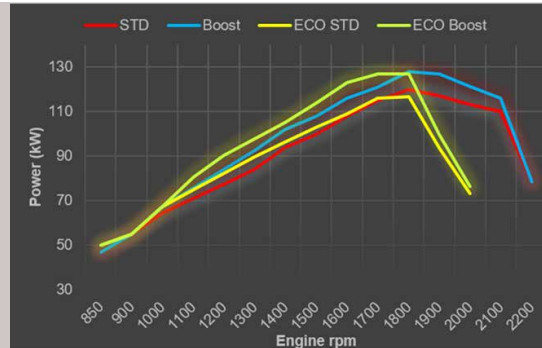
ROBUST STAGE V ENGINE

The N Series' 201 hp engine hold its position as the most powerful 4-cylinder tractor, with the best power-to-weight ratio in its class. The N Series is extremely agile without compromising on power on the ground and for PTO. Advanced engine features ensure that your working machine is reliable and complies with the latest emission standards without additional costs.



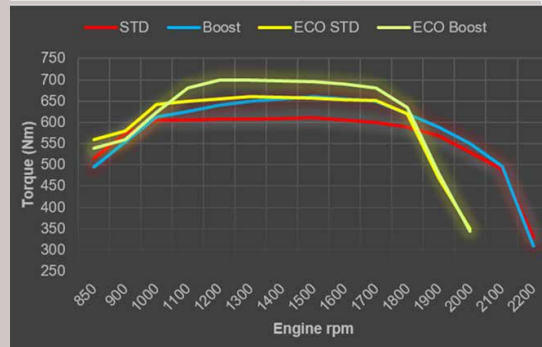
ECO MODE

Valtra N155 is an EcoPower model that gives you the option to select a low revolution engine curve to optimize fuel consumption. Engine torque increases while the top revs are reduced by 20%, reducing also engine noise, vibration and enabling 10% in fuel savings. The reduced revs and piston speed mean a longer life for both your engine and your tractor.



BOOST

When you need an extra boost, Sigma Power delivers extra power for PTO work. It is especially useful when you are working with implements that require a lot of PTO power, such as chippers and power harrows. In heavy PTO use, the engine will automatically produce up to 10 hp more power. In the N175 model the boost is up to 36 hp, giving the massive 201 engine HP for any PTO use, or for transport speeds.



RIGHT-SIZED AGCO POWER ENGINE

The beauty of the 4.9 litre engine is that the displacement is ideal for the power, meaning efficient overall fuel economy and strong pulling power on all engine revs.

ROBUST EXHAUST AFTER-TREATMENT

You can run your tractor without worrying about congested engine and expensive services. The engine after-treatment system cleans the exhaust according

to the Stage V standard - without compromising on visibility.

BEST OVERALL ECONOMY

Valtra and AGCO Power have a 70-year-long partnership. By working seamlessly together, Valtra and AGCO Power have been able to optimize the fuel consumption to the most efficient level. The N Series engines have 600h service interval and Hydraulic Lash Adjustment for lower service cost.

ALWAYS CONNECTED. ALWAYS IN CONTROL.

You work hard. You operate in challenging and diverse environments, running five jobs at once, putting in long hours and hauling distances. It's our job to make your tractor experience the best it can be. Our easy Connect, Care & Go service concept offers unrivalled practicality that eases the daily operation and maintenance without adding your costs. The best tractor experience is not just the machine, or the moment you purchase it – we, our partners and our vast dealer network are here to help you through the whole lifecycle of your tractor.

EASY DAILY SERVICE

You only need five quick checks to ensure an uninterrupted workday. All maintenance is easy to do.

- ✓ Visual check for tyre and oil leaks. Clean the grilles and radiator.
- ✓ Check the coolant level.
- ✓ Check the fuel and AdBlue levels.
- ✓ Check the engine oil level.
- ✓ Check the transmission oil level.



PEACE OF MIND. IN YOUR HANDS.

We believe in a seamless connection between our customers, dealers, machines and the Valtra factory. When connected you can select the desired service and warranty packages to meet your expectations and requirements. We take care of you, so you can take care of your business.

Valtra Connect

www.valtraconnect.com



CONNECT

TRACTOR DATA,
INFORMATION
AND SERVICES.

STAY CONNECTED ANYWHERE, ANYTIME

By choosing Valtra you are connecting with a team of professionals that help you make the most of your business. You can contact your local support through our online customer portal which also gives you 24/7 access to tutorials, contractual information and services around your machines. The Valtra Connect telemetry solution records tractor activity and GPS movements, all the time. It can display history and real time data on your mobile device and you can access the data anywhere, anytime. Using this data, you and your Valtra service partner can anticipate maintenance needs, and react faster to solve minor issues and avoid extra visits to your authorised service centre.



CARE

FACTORY EXTENDED
WARRANTY.

TOTAL PEACE OF MIND

With Valtra Care extended warranty contracts you can find ultimate peace of mind and security against additional repair costs of non-wearing parts. Care allows you to set your overheads when you purchase your Valtra tractor, or when the standard warranty expires. They are flexible, offering three excess levels – 0€, 290€ or 590€ and are available up to 5 years or 6,000 hours.



GO

MAINTENANCE
CONTRACT.

MAXIMISE YOUR UPTIME

Fix your costs at the point of purchasing your Valtra machine and ensure the optimum performance, while guaranteeing efficiency and maximise the residual value of your machine! Valtra Go service contracts ensure regular and thorough maintenance which will prolong the reliable operation of your Valtra tractor. Maintenance costs are small compared to repair costs resulting from lack of maintenance. The Valtra Go service package includes all prescribed maintenance work bookable up to 10,000 hours for new and used machines.

FINANCIAL STABILITY WITH COST CONTROL

There aren't two farms that are exactly the same. They each have unique features and individual challenges. That is why we offer a flexible solution to help you stay on top of your costs.

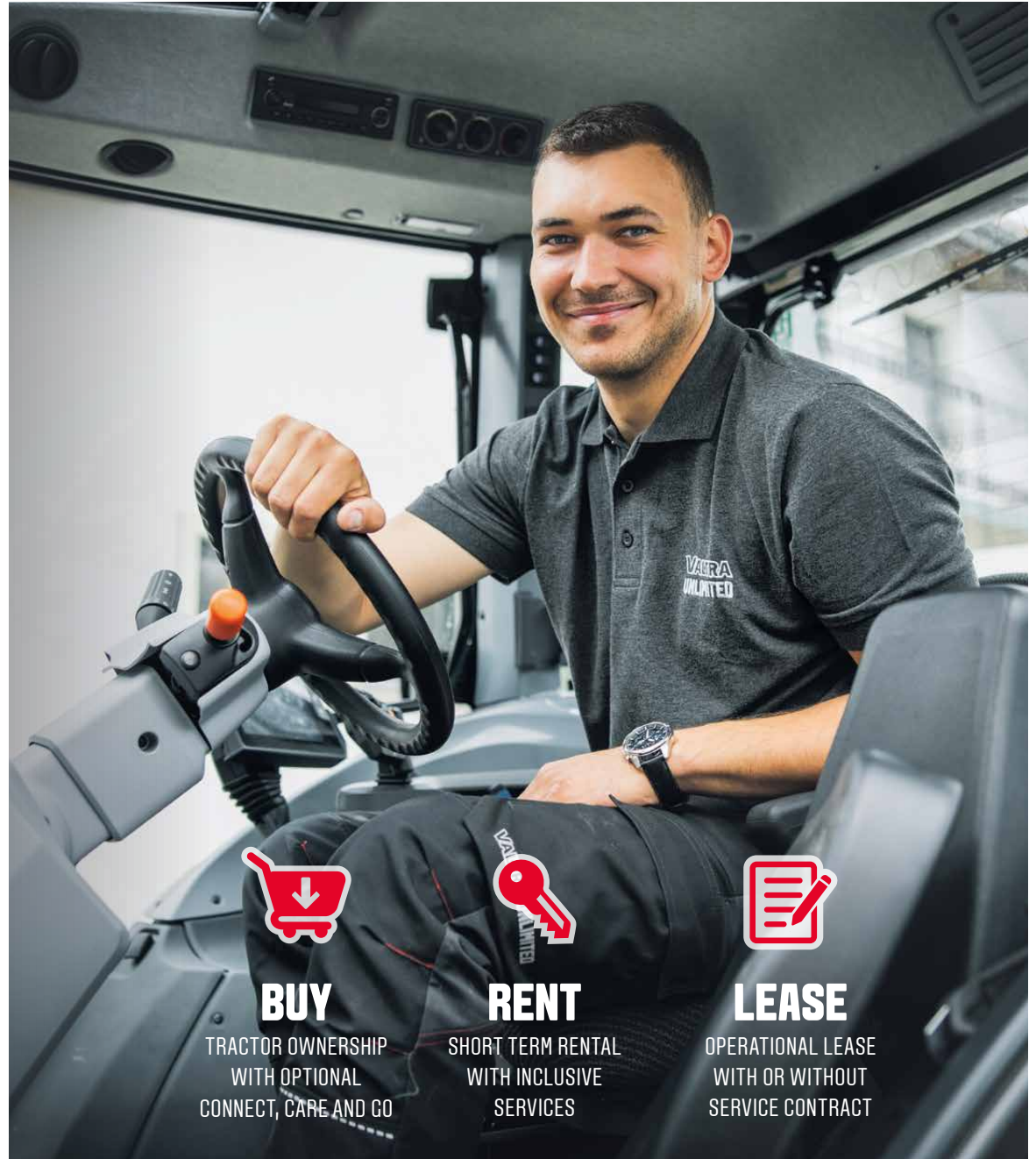
A farm's cashflow can often be unpredictable and affected by many external factors. Seasons are different and prices vary, so staying on top of finances can be tricky. For the sake of being successful and having peace of mind, you need financial stability and full control of your costs.

Machinery and equipment are both a vital part and a major expense on any farm operation. You need different solutions for different

situations, such as flexible models of ownership.

The financing of a Valtra machine is now easier and more flexible than ever before. With the **Rent, Buy, Lease** programme offered by **AGCO Finance**, we are able to build a financing solution to meet your needs. Together with **Connect, Care & Go**, it is the best way to keep your business cost-effective and stable.

LET'S TALK MORE!



BUY

TRACTOR OWNERSHIP
WITH OPTIONAL
CONNECT, CARE AND GO



RENT

SHORT TERM RENTAL
WITH INCLUSIVE
SERVICES



LEASE

OPERATIONAL LEASE
WITH OR WITHOUT
SERVICE CONTRACT



YOUR OWN VALTRA DEALER

Your Valtra dealer represents the best tractor and implement expertise in your area. He understands the technical aspects of your tractor and the challenges you face. You can always turn to your dealer and receive the best service from consultancy, maintenance, repair and spare parts to the purchase of a new piece of equipment. Valtra dealers are independent entrepreneurs. AGCO audits its dealer representatives each year to ensure that you get the best possible service.

GENUINE PARTS AND HIGH QUALITY ACCESSORIES - ALWAYS AVAILABLE

Valtra's comprehensive spare parts service supplies the parts you need – as fast as by the next morning. This helps you keep your tractor productive during the busy ploughing and harvesting seasons. The AGCO Parts label ensures that you are getting original Valtra spare parts that have been thoroughly inspected and tested.



UNLOCK



Missing a Smart Farming feature? As Valtra Guide is your key to the world of SmartFarming, it opens up a lot of possibilities. Equipping your Valtra tractor with Valtra Guide at the time of purchase, you can also equip it with other Smart Farming features. You can do this either when purchasing your tractor or at a later occasion when you have the need for the new features. Just contact your local dealer for prices and more information about upgrading your Smart Farming features.

AGCO MAKES THEM UNBEATABLE, WE MAKE THEM AFFORDABLE.

At AGCO Finance we tailor your personal finance solution based on your cash flow and operation. Tell us how much you can afford on a monthly basis and we will create a flexible payment schedule according to your business needs, taking seasonal variations into account.

As a full service provider we also offer financing services such as leasing, rental

and insurance. Our services may vary between countries, so please check our website or your nearest dealer for the available offering.

VALTRA TEAM

Valtra Team is our customer magazine, published twice a year. Each issue contains useful information about the latest innovations and the most efficient working methods. You can also access the

magazine's archives online and read articles dating back to 2000.

AGCO ACADEMY

Tractors and related technologies, especially precision farming technologies, are developing at a rapid pace. The Valtra Academy continuously trains Valtra dealers and service technicians, so that the first-class and up-to-date expertise that you get from your Valtra dealer today will continue to meet your needs in the future.

VALTRA COLLECTION

The Valtra Collection offers high-quality clothing and accessories for work and leisure. The materials and details are carefully selected. The clothing reflects Valtra's modern design language, with light, yet extremely durable materials that combine style and functionality.



COST-EFFECTIVE OPTIONS TO MEET YOUR NEEDS

Building your working machine with Valtra is an experience in itself. We offer hundreds of different accessories and options to choose from, adding up to an infinite number of different combinations. Because picking and choosing can be difficult, we now offer cost-effective option packages to help you with decision-making.

The option packages make it easier to specify a new tractor: nothing important is left out and the resale price of the tractor is also taken into account. When purchased as a package, the equipment is less expensive than when ordered separately. Best of all, the option packages do not limit you from selecting additional features from the Unlimited Studio.



SELECT YOUR OPTION PACKAGE

Choose a cost-effective option package to meet your needs.



SELECT YOUR FRONT LOADER

The N Series is the front loader king, and the Front loader package unlocks the whole range of possibilities. The tractor's great visibility and nimble turning radius are perfectly complemented by the option package, which includes a factory-fitted and tested front loader & subframe set.



CUSTOMISE TO YOUR NEEDS

You can add Valtra Unlimited options to any Option Package to tailor your tractor to your exact needs.

COMFORT

- Front axle 4WD Heavy Duty Hi-Lock with steering sensor (only N135H, A, V)
- AIRES Front Axle Suspension & Compressed air system
- Wide angle windscreen wiper
- Suspended cab
- Seat, Air Suspended+ OR Valtra Evolution
- Work Light Premium or Premium+ with LED lights



OPTION PACKAGE
COMFORT

COMFORT PRO

- Premium interior
- Radio & phone control via SmartTouch (Versu & Direct)
- Automatic air conditioning + lower heater unit
- Right side window wiper



OPTION PACKAGE
COMFORT PRO

TECHNOLOGY PRO

- Full Valtra Guide centimetre accuracy with Novatel or Trimble antenna
- Wayline Assistant
- Precision farming: One of 4 Section Control or Section Control & Variable Rate options
- SmartTouch Extend
- TaskDoc Pro
- Auto U-Pilot
- All options from Comfort and Technology



OPTION PACKAGE
TECHNOLOGY PRO

TECHNOLOGY

- Full Valtra Guide: one of 4 options with Novatel or Trimble antenna
- ISOBUS rear
- AutoControl D, drive balance control + rear linkage slip control system with radar sensor
- Automatic Slip Regulator system (Versu and Direct)
- Power socket set
- All options from Comfort



OPTION PACKAGE
TECHNOLOGY

TECHNOLOGY PRO X

- Full Valtra Guide centimetre accuracy with Novatel or Trimble antenna
- Wayline Assistant
- Valtra Section Control 36 + VRC 5 products
- SmartTouch Extend
- Auto U-Pilot
- TaskDoc Pro
- TaskDoc Pro server license 1 year
- Agrirouter 1 year
- All options from Technology and Technology Pro



OPTION PACKAGE
TECHNOLOGY PRO X

YOU FIND THE WORK. WE'LL FIND THE WAY.

A tractor is the perfect machine for municipal work, forestry, airport maintenance and defence. It's because of changing work needs or wanting to stand out from the crowd, there's always a reason to go Unlimited. What do you need? What have you been dreaming of? Done and done. We make it happen.

PERFORMANCE FOR ANY PURPOSE

The Unlimited studio can fit any accessories and equipment that are not available directly from the production line during the normal manufacturing process. With Valtra Unlimited, your tractor is a true multi-purpose vehicle, built according to specifications given by you, with the design, comfort and features you need to perform in any environment.

FACTORY-FITTED

All the accessories and equipment fitted by the Valtra Unlimited studio are covered by the factory warranty, and we also supply all the servicing and spare parts for them. The accessories and equipment available from the Unlimited Studio include additional lights, central lubrication, stereo systems and much more.



MUNICIPALITY

365-day multi-purpose vehicle

The regulations of municipal machinery call for particular features. A special colour scheme, safety colours and lights, warning signs and other safety enhancing features can all be fitted at the Valtra Unlimited Studio. By replacing specialized vehicles with a tractor you can significantly increase your efficiency, both financially and in terms of productivity.



AIRPORT MAINTENANCE

The same as a truck and much more

A tractor can easily replace trucks in airports due to their versatility and suitability. With the correct tools, such as ploughs, sweeper-blowers and mowers, your Unlimited tractor can be utilised year-round. With features such as airport radio, correct tyres and lights and specific colours, your machine will be perfect for airport maintenance.



FORESTRY

For tough work and rough terrain

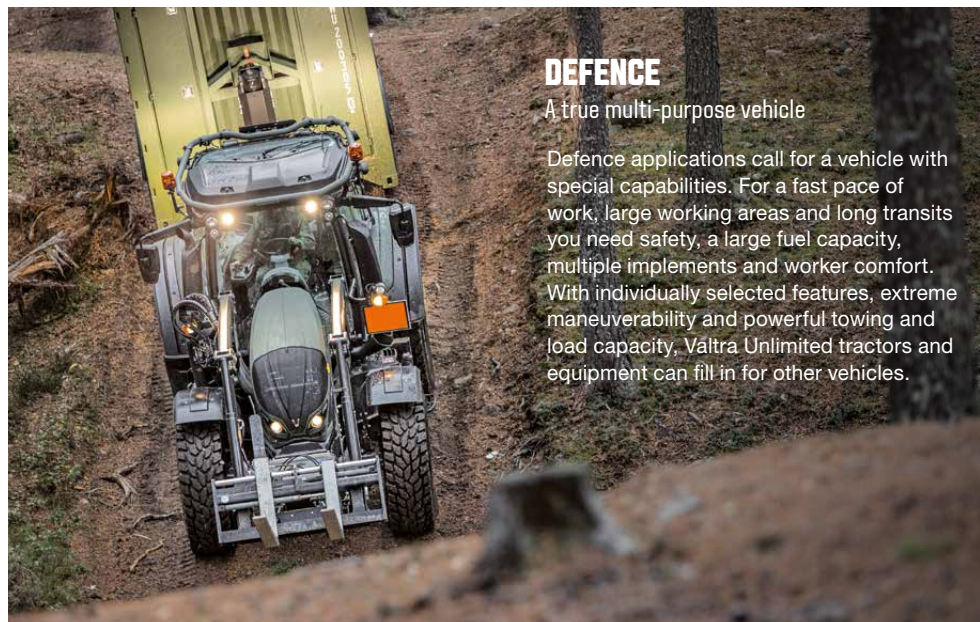
With TwinTrac and a SkyView cab, The N Series is a great choice for forestry tasks, but with Unlimited you can get even more out of your machine. A Kesla crane can be factory-fitted with a forest mounting kit, with easy unmounting options. Forestry tyres and LED working lights provide working comfort, and in SmartTouch models the forest loader controls can be seamlessly integrated into the ergonomic Valtra armrest.



DEFENCE

A true multi-purpose vehicle

Defence applications call for a vehicle with special capabilities. For a fast pace of work, large working areas and long transits you need safety, a large fuel capacity, multiple implements and worker comfort. With individually selected features, extreme maneuverability and powerful towing and load capacity, Valtra Unlimited tractors and equipment can fill in for other vehicles.



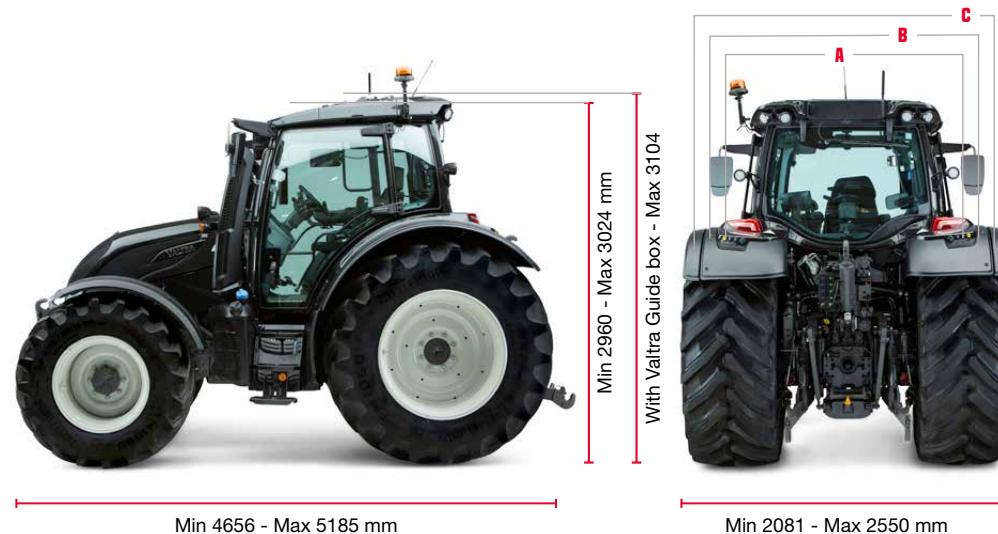
N SERIES TECHNICAL SPECIFICATIONS

105 - 201 HP



MODEL	MAX POWER		MAX. BOOST POWER		MAX. TORQUE NM		
	HP	kW	HP	kW	STD	BOOST	
N135	135	99	145	107	570	620	
N155e	ECO	155	114	165	121	660	700
	STD	155	114	165	121	610	660
N175	165	121	201	148	680	800	

See specifications table for further engine data, according ISO 14396. The boost values are available in field and road speeds as well with Sigma Power (option) in PTO use. For model N175 Sigma Power is STD and the boost value is 175 hp for field traction.



Own working weight 6500 kg
Max total weight 11000 kg

Mudguard widths:
A: forest 2081 mm
B: narrow 2280 mm
C: wide: 2550 mm

MODEL	HITECH • ACTIVE • VERSU • DIRECT
	N135-N175
DIMENSIONS WITH 600/65R38 + 480/65R28	
Wheel base [mm]	2665
Length (without front linkage)	4726
Transportation length, with front linkage	5156
Height, without Valtra Guide box, [mm]	2960
Width, max [mm]	2550
Turning radius [m]	4.5
Ground clearance mid [mm]	500
Ground clearance rear (no hitch) [mm]	595
Weight (full tanks, + driver) [kg]	6500
Weight distribution Front/Rear [%]	38/62
Max total weight [kg]	11000
Fuel capacity, basic [l]	235*
Fuel capacity, steel tank [l]	160
AdBlue, capacity [l]	45
Min tyre size (rear SRI 825)	460/85R38 + 380/85R28
Max tyre size (rear SRI 875)	650/65R38 + 540/65R28

*optional large tank 315 l



MODEL	HITECH	ACTIVE	VERSU	DIRECT
	N135-N175			
ENGINE				
Agco Power engine type	49 LFTN-D5			
No of cylinders	4			
Engine volume, (litres)	4.9			
Engine speed at max power [r/min]	2000			
Engine nominal speed [r/min]	2200			
Engine speed at max torque [r/min]	1500			
N155 Eco-mode max power at [r/min]	1750			
N155 Eco-mode max torque at [r/min]	1250			
Idle speed [r/min]	850			
Low idle (shuttle lever on P) [r/min]	700			
Oil-change interval (h)	600			
Emission grade	Stage V			
Exhaust cleaning system	DOC + DPF + SCR			
TRANSMISSION				
Number of gears	20+20R (HiTech)		CVT	
With creeper	30+30R		-	
Number of work areas	4 (A, B, C, D)		4	
Number of powershift gears / area	5		-	
STD speeds at 2100 r/min with creeper [km/h]	0.6-401 or 0.7-50 or 0.7-572		0.03 -40/50/57	
Top speed 43 km/ reached at [r/min]	1990 or 1600		1700	
Top speed 53 km/ reached at [r/min](option)	1970		1800	
Lowest creeper speed at 2200 r/min [km/h]	0.6 or 0.7		0.03	
Front axle suspension	Pneumatic, AIREs			

MODEL	HITECH	ACTIVE	VERSU	DIRECT
	N135-N175			
HYDRAULICS				
Lifting power rear, (max kN)	78			
Lifting power entire lift range, [kN]	76			
Lifting power entire lift range, [Front, kN]	option, 30 (max 47)			
Type of Hydraulics	Open center	Load Sensing		
Pump capacity max [l/min]	73(90)	115 (160, 200)		
Transmission and hydraulic oils	Common oil	Separate oils		
Number of mechanical service valves rear	2, 3 or 4		--	
Number of electrical service valves rear	--		2...5	
Number of ON/OFF valves rear	--		1	
Number of electrical service valv. FRONT	2,3 or 4			
Oil available for implement [litres]	40	47		
PTO				
2 Speeds @ engine speed [r/min]	540@1890 + 1000@1897			
3 Speeds @ engine speed, option [r/min]	540@1890 + 1000@1897 + 540E@1522			
2 Speeds + Ground Speed option	with GS ratio 41,03 (40 km/h) or 40,79 (50 km/h)			
Front PTO option, speed @ eng. speed [r/min]	1000@2000			
INTERFACES				
Valtra ARM (armrest control)	Option		--	
Valtra SmartTouch User Interface	--		STD	
Valtra Connect	Option			
Valtra Guide options	Option			



You take on extremes each day.

You work in challenging environments, climates and landscapes.
You work hard, putting in long hours and hauling distances.
You work with jobs that ask for speed, power and precision.

To be in complete control, you deserve a visionary partner.
To be always connected, you need the smartest machine.

That is why you trust Valtra.

We work hard to make hard work easy.
We find new ways to solve your challenges.
We make machines that are tough on the outside
and smart on the inside.

Our machines are built to last.
Built to work. Built for you.

YOUR WORKING MACHINE



VALTRA is a worldwide
brand of AGCO.

Valtra Inc.
Valmetinkatu 2
FI-44200 Suolahti
Tel. +358 (0)2045 501

www.valtra.com
showroom.valtra.com
www.youtube.com/valtravideos
www.facebook.com/ValtraGlobal

The tractors that appear in this brochure may be equipped with special options.
Changes possible - all rights reserved.